



Div50 Web Installation - IIS Technical Note

Contents

INSTALLING IIS	2
CHECKING YOUR IIS INSTALLATION	3
CONFIGURING A WEBSITE IN IIS	6
IIS 6.0 SECURITY.....	8

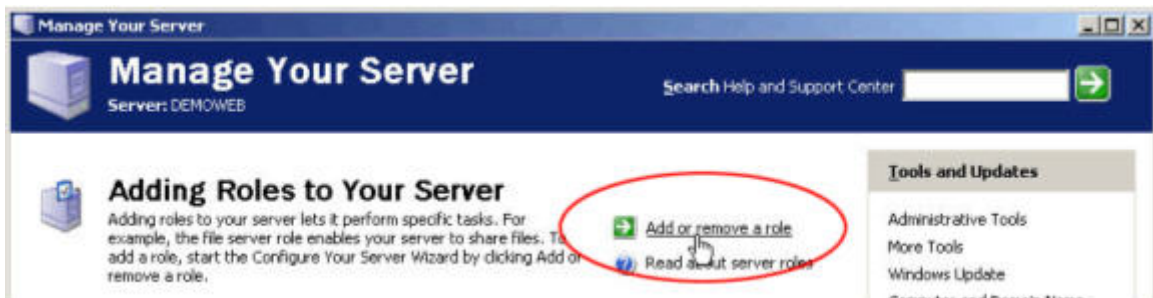
Web Installation - IIS Technical Note

Installing IIS

Installing Internet Information Server (**IIS**) in Windows Server 2003 is installed graphically using the Manage Your Server wizard. The system requirements are a PIII 550 MHz processor, 256 MB of RAM and 500 MB of free hard disk storage space.

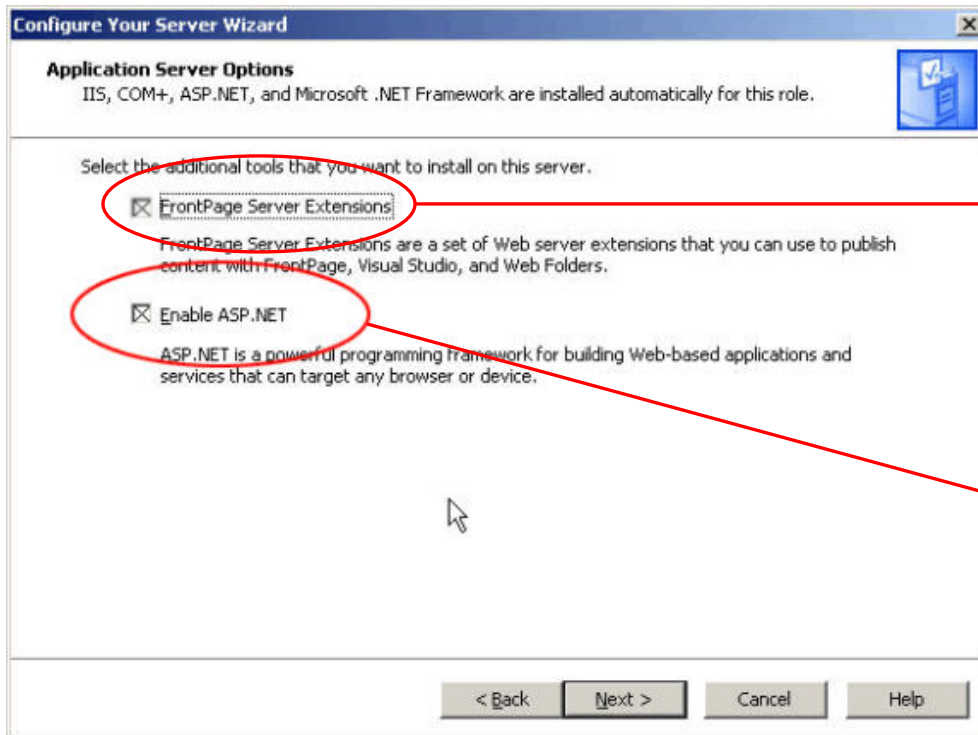
IIS can be installed on any of the Microsoft Windows 2003 versions (Standard, Enterprise or Web Edition). You must log on as a member of the Administrators group on the local computer to perform the following procedures.

When you start your server, you should see the Manage Your Server wizard. If you don't get the display by default, you can go to Administrative Tools and click on Manage Your Server. When the wizard opens, click on Add or Remove a Role.



Click **Next** and let the server detect your settings, then choose Custom Configuration and click **Next**, then choose the Application Server role and click **Next**. This will bring you to the Application Server Options screen of the wizard.

Web Installation - IIS Technical Note



Select if we have to publish a .NET Application from Visual Studio

Required for ASP.NET applications

Check the box to Enable ASP.NET, and, clear the checkbox to disable FrontPage Extensions at this time. (However, if you want to publish .NET applications from Visual Studio, you may want to enable FrontPage Extensions.) At any time, once we've selected what we want, we click **Next** to set up the role. The process may ask you for the Server 2003 CD and will take several minutes to complete. Just let it run until you see the Finish button, then click Finish.

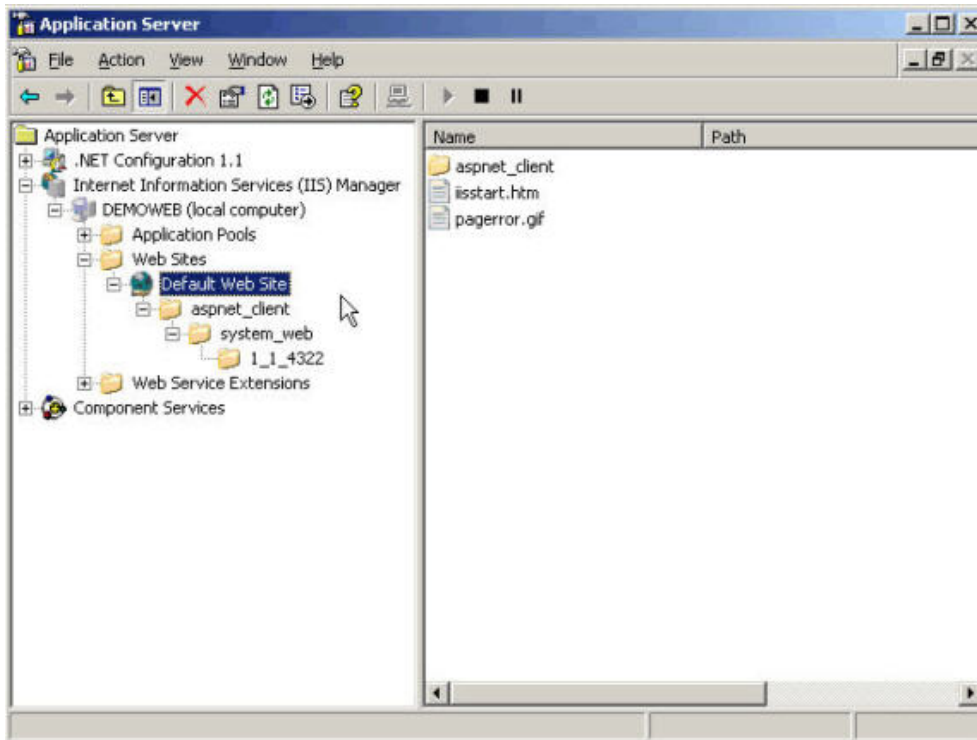
Checking Your IIS Installation

Once you've installed the Application Server role to your server, you'll naturally want to check and see if it works. The Manage Your Server wizard should now show the Application Server role installed, so click on Manage This Application Server.



This brings up the Application Server Management Console (MMC). Expand the Internet Information Services (IIS) Manager, then expand your server (local computer), and then the Web Sites folder. You should see the Default Web Site listed, and it shouldn't say (Stopped)

Web Installation - IIS Technical Note

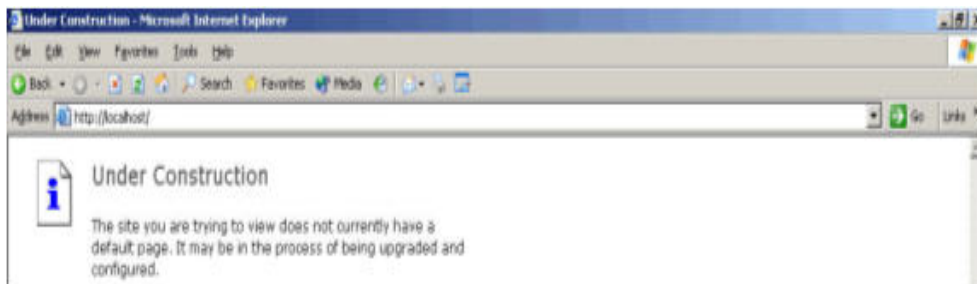


Alternatively this console can also be started from the Administrative tools in Programs Menu

Web Installation - IIS Technical Note



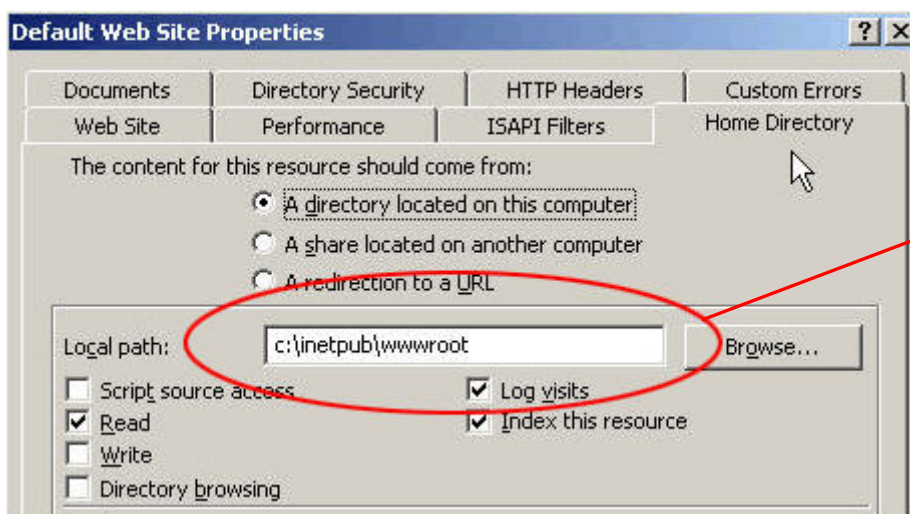
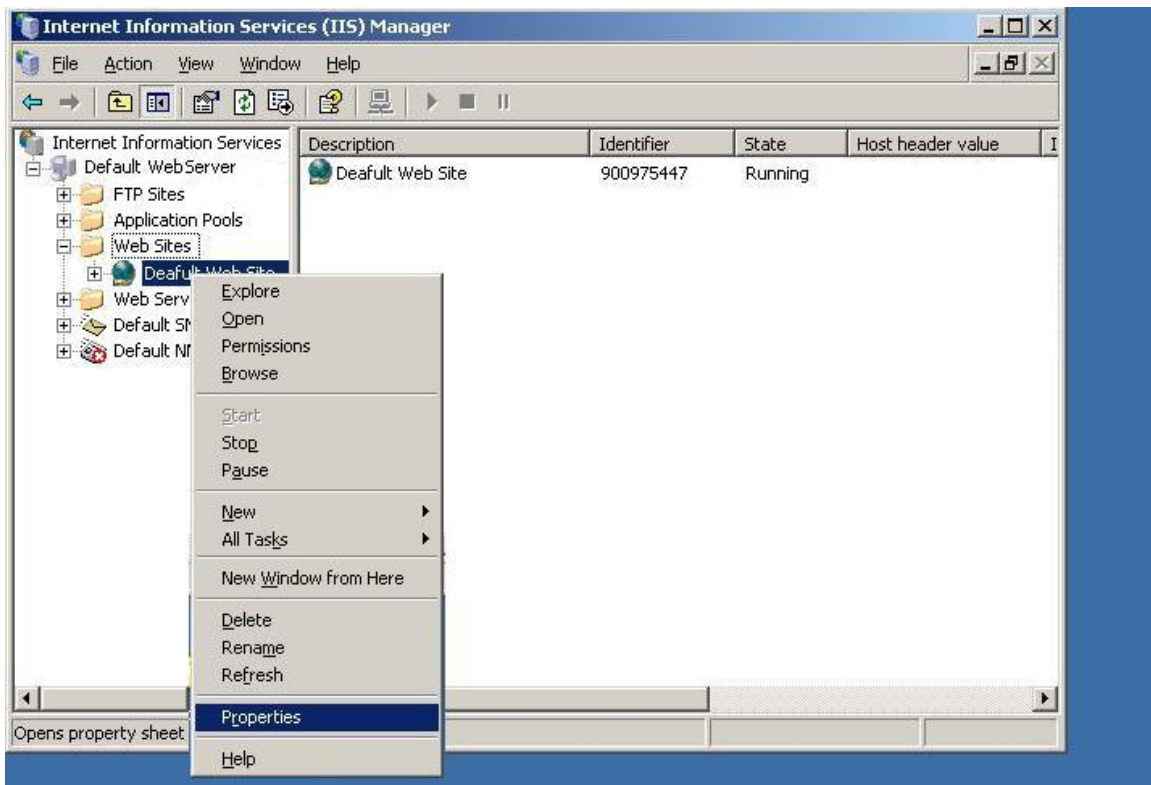
For now, ignore the files and folders listed in your default web site, we just want to test to make sure IIS is running and serving a web page. On the server itself, launch Internet Explorer (IE) and browse to <http://localhost/>. “Localhost” is a networking indicator for the system you are physically sitting at, and should work in a default configuration of Windows Server 2003. You should see the “Under Construction” web page if your server is running correctly.



Web Installation - IIS Technical Note

Configuring a Website in IIS

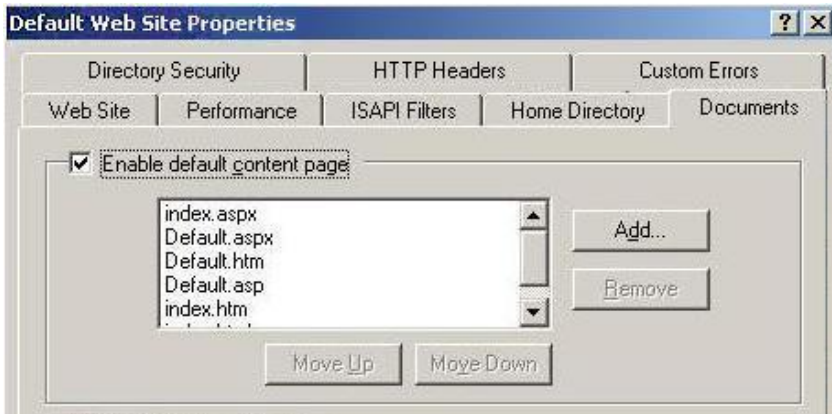
In order to get the website running put the files of the website on the default website location that is C:\inetpub\wwwroot and set the default page (i.e. home page of main page of the website). The default location of the website and the default page settings can be changed from the properties of the website.



This is the default location for all the Websites on a Web Server but it can be changed as required

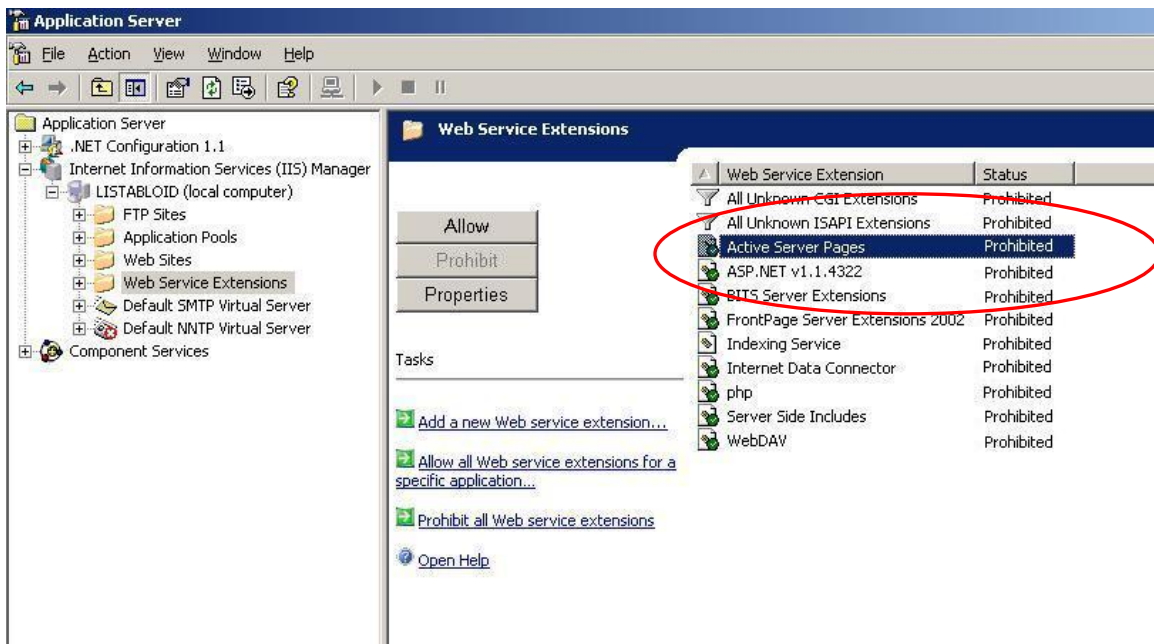
Web Installation - IIS Technical Note

After this we need to set the default page of our site on the Documents tab



Default page can be any page not necessarily an index.htm or default.html page the only thing needed to be done is to put our default page on the top of the list and remove unwanted files from the list

If the ASP pages don't open when we browse website then we need to enable Active Server Pages on the IIS Server. It can be done through the Application Server Management Console. In the Application Server Management Console, click on the Web Service Extensions folder underneath the server name. You should see that Active Server Pages are Prohibited, this is the default configuration of IIS.



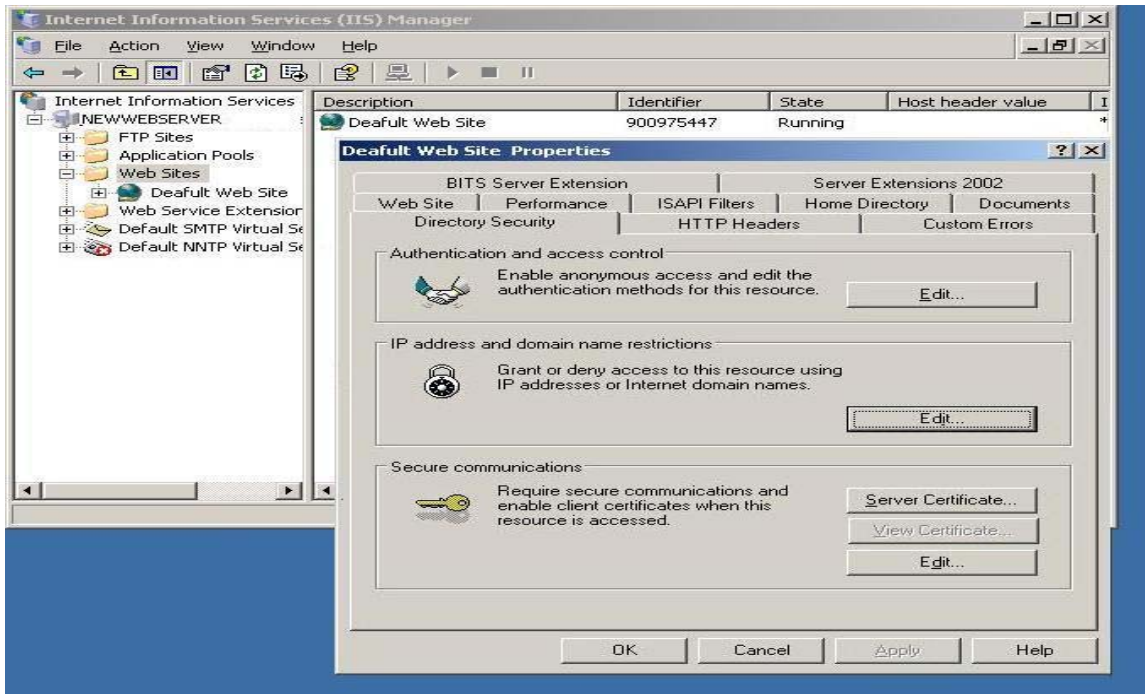
To Allow ASP pages, simply highlight Active Server Pages and click the Allow button. ASP is now active on this web server, and if you go back to Internet Explorer and refresh the page it should appear. Similarly ASP.NET, FrontPage Server Extension and other features can also be allowed.

This makes the website available for browsing, only thing required is to facilitate proper network connections and DNS server connection for browsing on the net.

Web Installation - IIS Technical Note

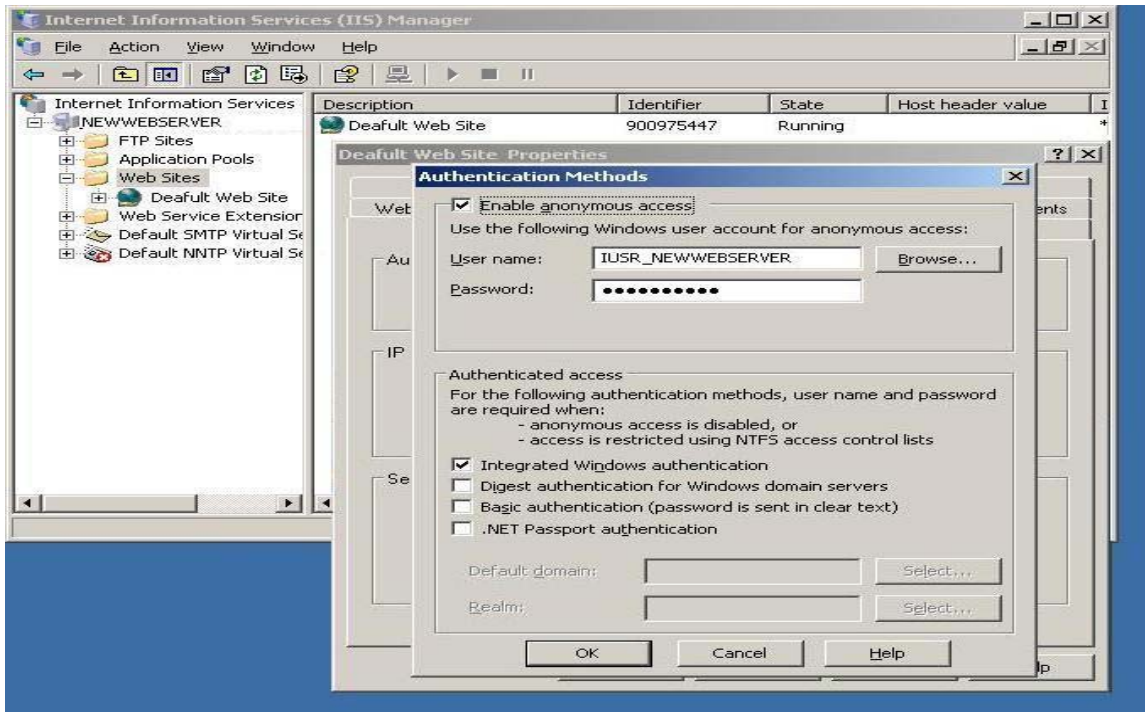
IIS 6.0 Security

The Security settings in IIS are placed under the properties of the particular websites. These are the very basic security settings related to user access and IP or Domain access.



Authentication and Access controls the type of users who can access the website. We have 5 type of access systems

Web Installation - IIS Technical Note

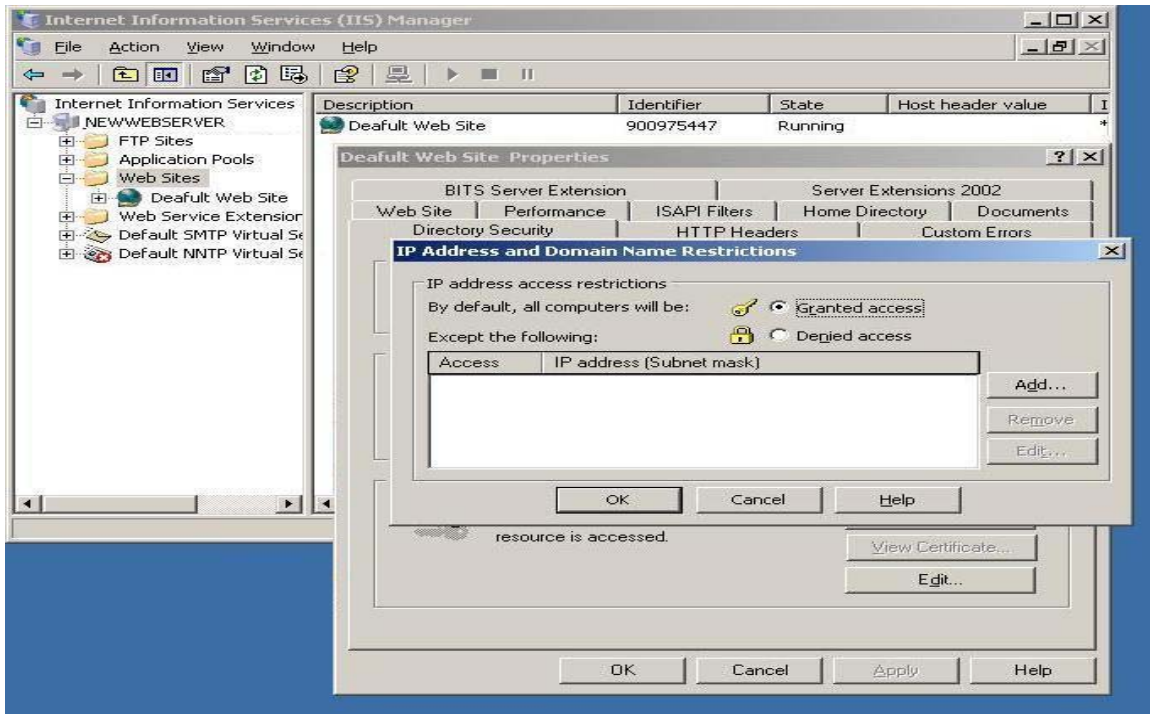


1. Anonymous access : this is the default for all websites on the net as it does not require Username and Password from the User to browse.
2. Integrated Windows Authentication: this is a secure authentication system which integrates the security of Windows Operating System with the Website each user accessing the site should have a username and password on the Server.
3. Digest Authentication for Windows Domain Server: this is similar to the Windows Authentication with the exception of mode of transfer of Password and Username across the Internet.
4. Basic Authentication: the most basic authentication system in which password and username are sent in an unsecured manner across the internet and in prone to network eavesdropping.
5. .NET Passport Authentication: this is the latest Microsoft Authentication system in which Microsoft .NET Passports (Hotmail or MSN passwords) are integrated to the IIS server.

By default we use Anonymous access as we have to host this site on the Internet.

In the IP Address and Domain Name Restriction field can be used to grant or restrict access to a particular IP address range or a Domain. The default setting is to grant access to all computers but it can be modified on the basis of requirements.

Web Installation - IIS Technical Note



Apart from the above security settings it is strongly recommended that you use the NTFS file system, instead of the FAT or FAT32 file system, for your application server. With NTFS, you can limit access to your Web server's files and directories. You can also configure the access level granted to a particular user or group for the files and directories on your server. IIS server also has Website permissions but they can be configured for specific sites, directories, and files. Unlike NTFS permissions, Web site permissions affect everyone who tries to access your Web site.