



di Monitoring Installation User's Guide

Contents

Introduction	3
<i>Content overview</i>	3
Installing Windows 2003 Server Components	4
<i>System requirements</i>	4
di Monitoring Web Set-up	7
<i>Setting Folder Permissions</i>	8
<i>Creating a URL and Setting up di Monitoring</i>	12
<i>Creating a Virtual ISS Directory</i>	21
<i>Accessing the di Monitoring Web Application</i>	27
<i>Configuring 64-bit Systems</i>	28



Introduction

di Monitoring is a web-based data management application intended to facilitate the tracking of development plans. The application is powered by DevInfo database technology.

Content Overview

Installing di Monitoring on the Web enables multiple users to concurrently access a di Monitoring framework from a single server installation. The Web installation of di Monitoring involves three main steps:

- Installing server components— IIS and ASP.NET
- Installing the di Monitoring Web application
- Managing folder permissions

Installing Windows 2003 Server Components

System requirements

To install a Web set-up for di Monitoring, you need to have Internet Information Services (IIS), the .NET framework and ASP.NET installed on your Web server. IIS is a web application server program that handles HTTP requests. It is a suite of tools and services available as a component of Microsoft Windows Server 2003. IIS is available as a Windows component but is not installed on Windows Server 2003 by default. Microsoft strongly recommends installing IIS on a NTFS-formatted drive. NTFS is a more powerful and secure file system than FAT and FAT32. You must have administrator access on the local computer in order to perform the following procedure.

Step 1

From the **Start** menu, point to **Control Panel** and then click **Add or Remove Programs**. Click **Add/Remove Windows Components**.

Step 2

In the **Components** list, click the **Application Server** check box. Then click **Details** (Fig. 1).



Figure 1 - Windows Components Wizard window

Step 3

In the **Subcomponents of Application Server** list, click the **Internet Information Services** check box. Click **OK** to return to the main menu (Fig. 2).

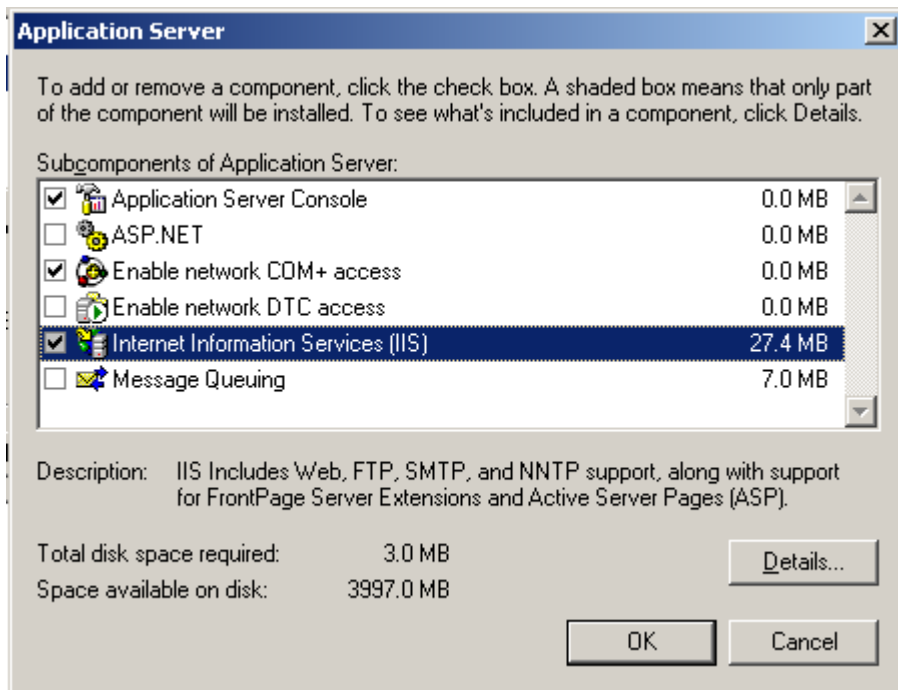


Figure 2 - Application Server window

Step 4

Click **Next** to start the installation process. The set-up process may ask for the Microsoft Windows Server 2003 installation CD.

di Monitoring Web Set-up

di Monitoring is available royalty-free for download. For information about downloading the application, please contact the DevInfo Support Group at support@devinfo.info.

When successfully downloaded, copy and unzip the application folder to the C:\ drive (Fig. 3).

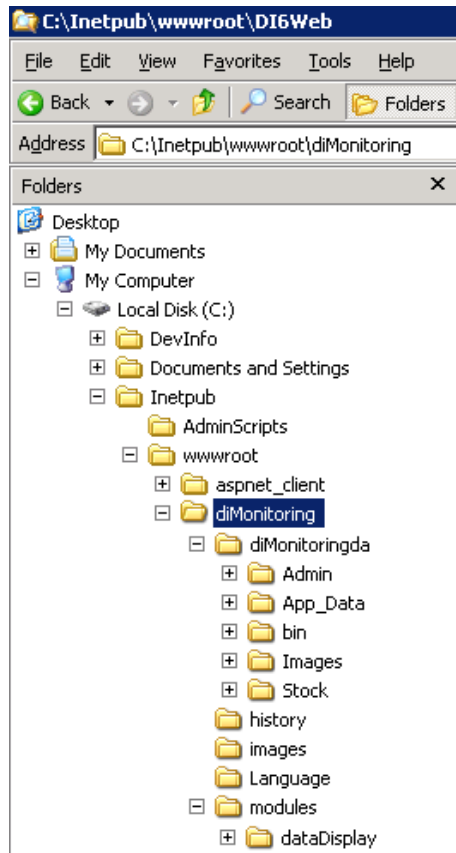


Figure 3 - di Monitoring folder structure as visible in Windows Explorer

Setting Folder Permissions

Step 1

In Windows Explorer, navigate to the **di Monitoring** application folder. Right-click on the **di Monitoring** folder and click the **Sharing and Security** option from the context menu.

Step 2

The **Properties** window opens. Click the **Security** tab and then click **Add** (Fig. 4).

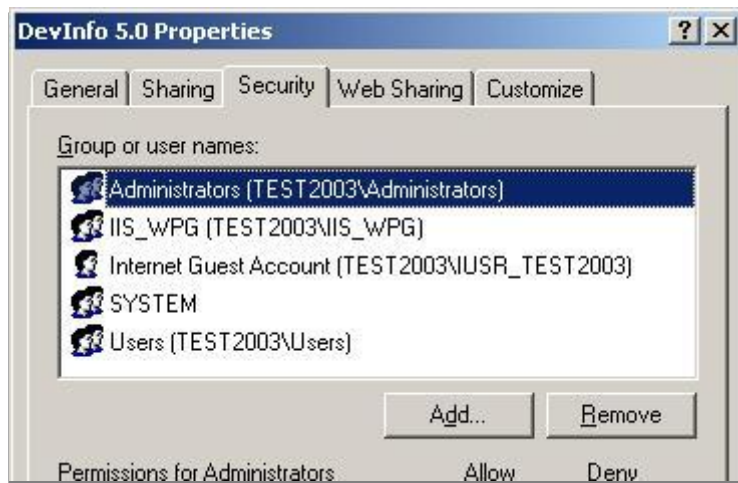


Figure 4 - di Monitoring Properties window

Step 3

The **Select Users or Groups** dialog box opens. Click **Advanced** (Fig. 5).

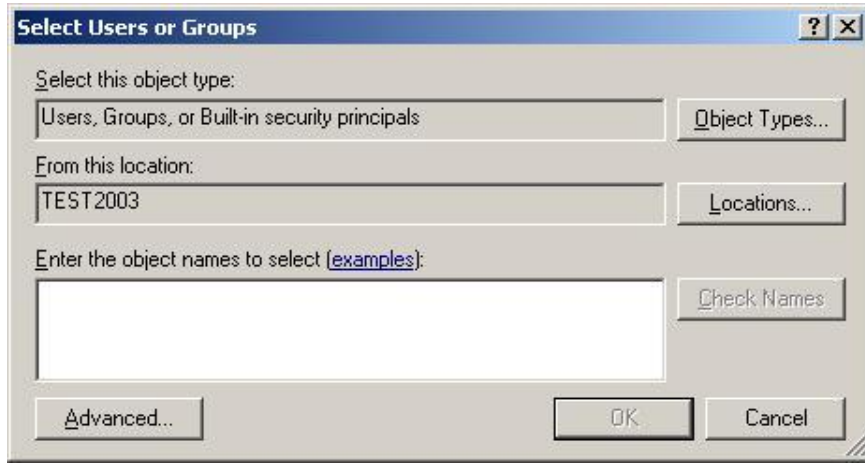


Figure 5 - Selecting Users and Groups dialog box

Step 4

Click **Find Now** to search for Users and Groups (Fig. 6).

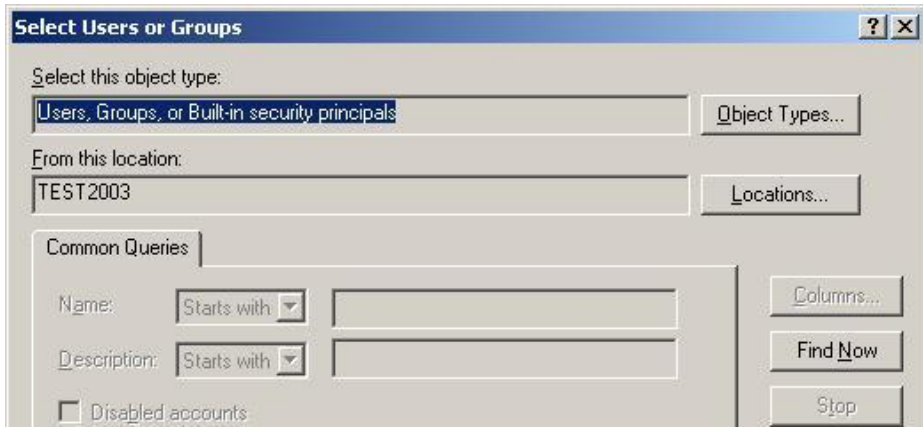


Figure 6 - Searching for users and groups

Step 5

The search results are displayed in the list. Click **ASP.NET** from the list and click **OK** (Fig. 7).

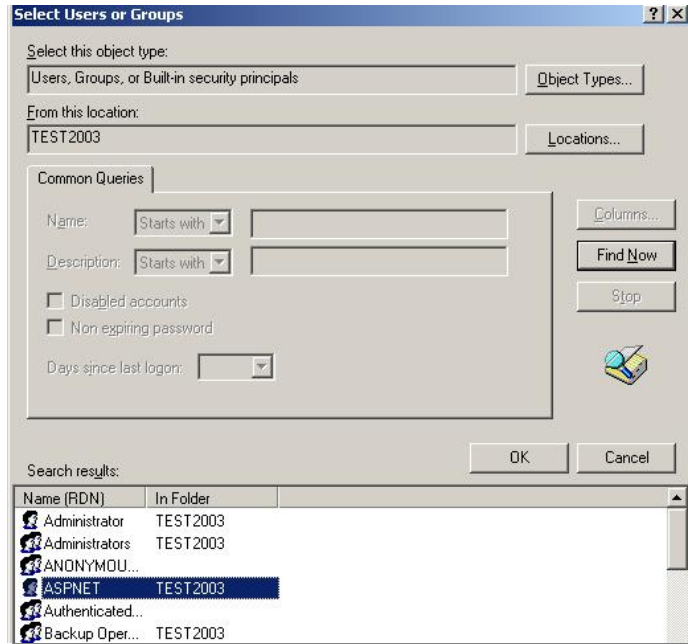


Figure 7 - Selecting the ASP.NET Machine Account

Step 6

The user and location is now displayed in the **Select Users or Groups** dialog box. Click **OK** to return to the **Properties** window (Fig. 8).

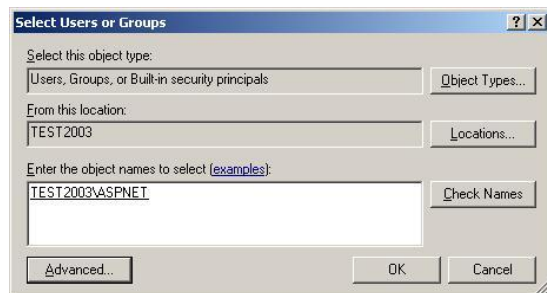


Figure 8 - Selecting the ASP.NET Machine Account

Step 7

Under Permissions for ASP.NET Machine Account, click the Full Control check box.

Similarly, under the **Group or user names** list, click **IIS_WPG (TEST2003IIS_WPG)** and **IIS_IUSR** and assign full permissions. Click **OK** to complete the process (Fig. 9).

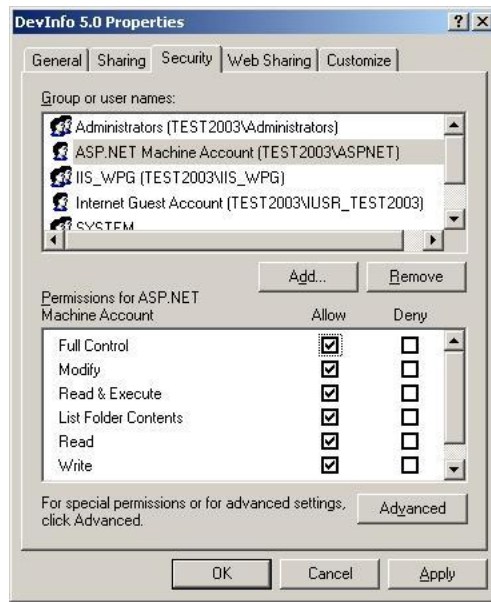


Figure 9 -: Setting Permissions for ASP.NET Machine Account

Creating a URL and Setting up di Monitoring

Now the di Monitoring application can be installed on a server through IIS. This involves creating a customized URL and associating that URL with the application installed on the server.

Step 1

Open Internet Information Services and right-click **Application Pools** from the **Connections** menu. Select **Add Application Pool** (Fig. 10).

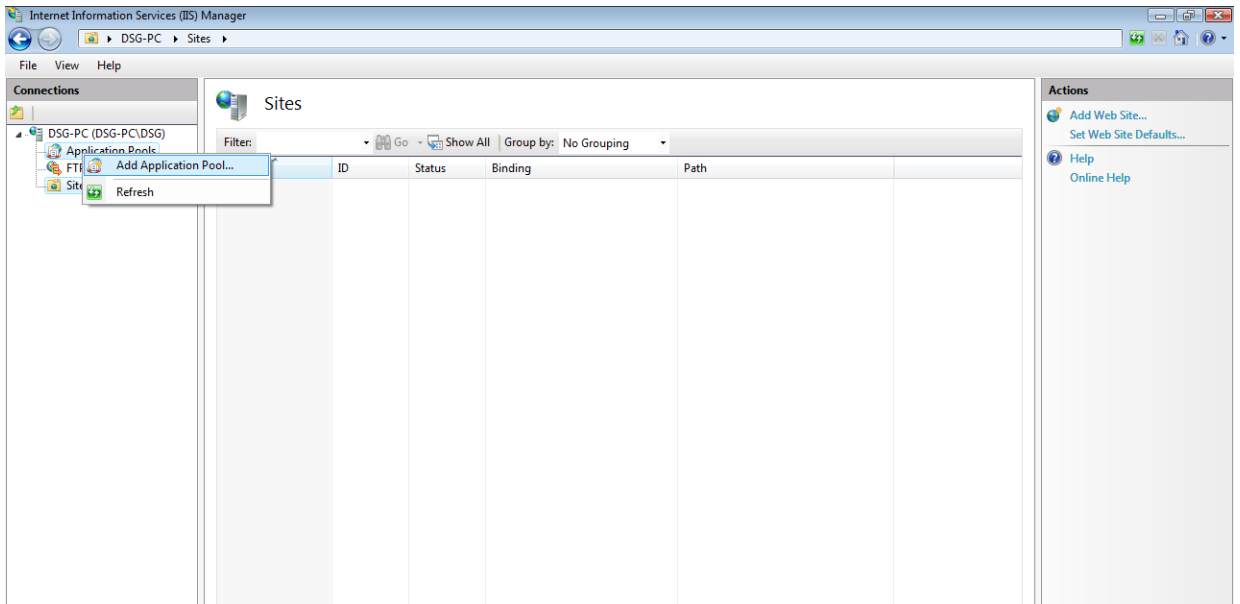


Figure 10 - Adding an application pool

Step 2

Enter the name of the application pool. In this example, the name “dimonitoring2” is entered. Select **.NET Framework v. 2.0**.

Next, select **Classic** from the **Managed pipeline mode** drop-down list. Click **OK** (Fig. 11).

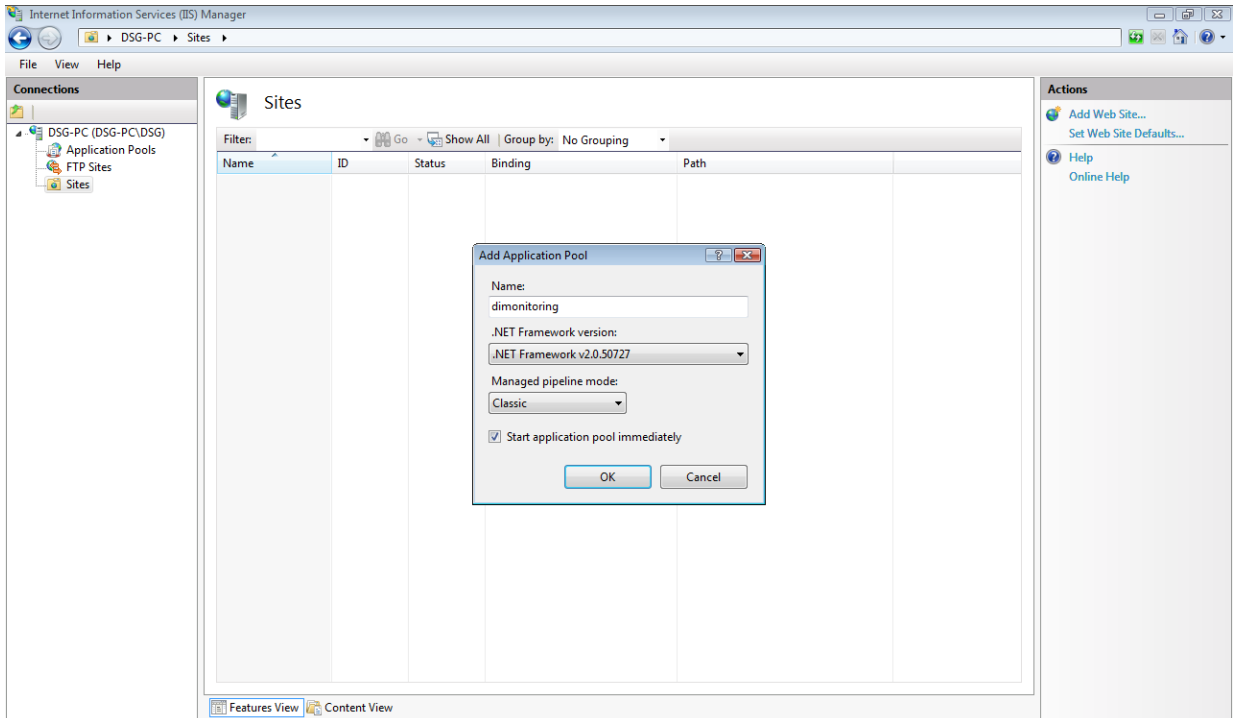


Figure 11- Establishing settings for an application pool

Step 3

Now a domain name for the website and the IP address must be established. Right-click the **Sites** folder and select **Add website** (Fig. 12).

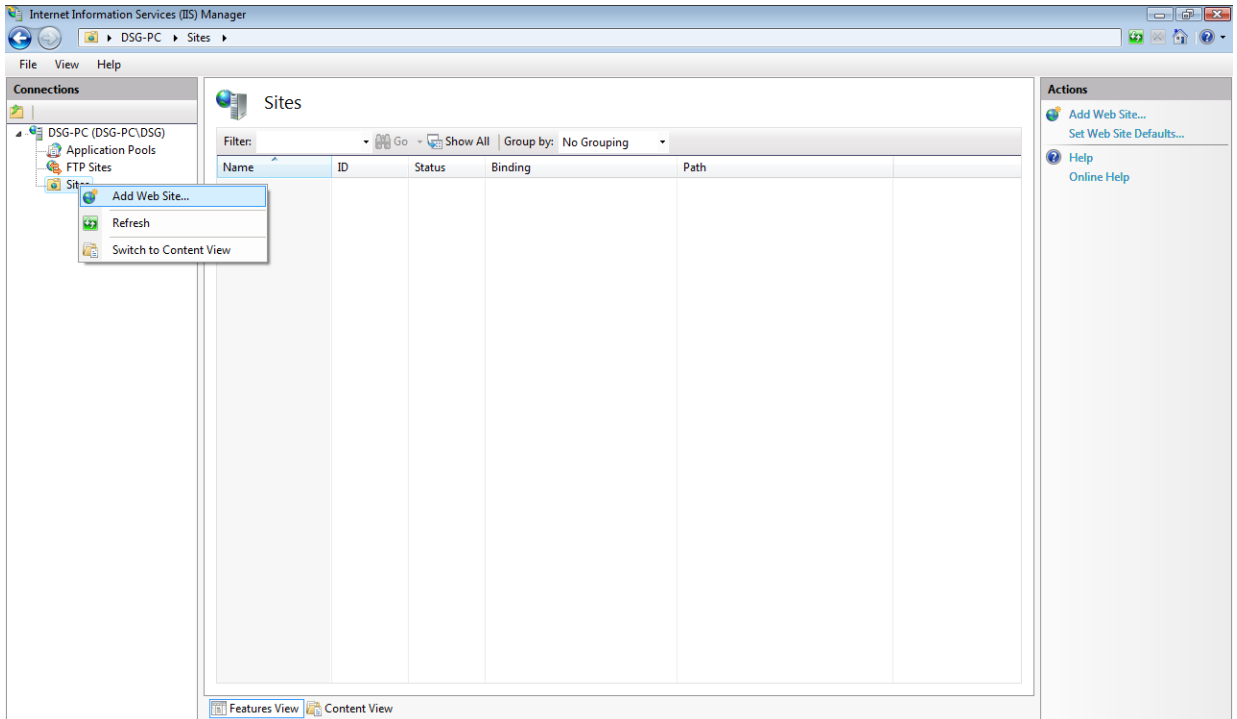


Figure 12 - Adding a website URL

Step 4

Enter your desired site name in the **Site name** box. In this example, the site name is “dimonitoring2.” Click **Select** and select the application pool previously created in Step 2. In this example, the same name (“dimonitoring2”) was selected as the application pool. Under **Physical path**, browse for the folder location where you have saved the di Monitoring application. Select the di Monitoring folder and click **OK**. Leave the IP Address as **Unassigned** or select the public IP address from the drop-down list (Fig. 13).

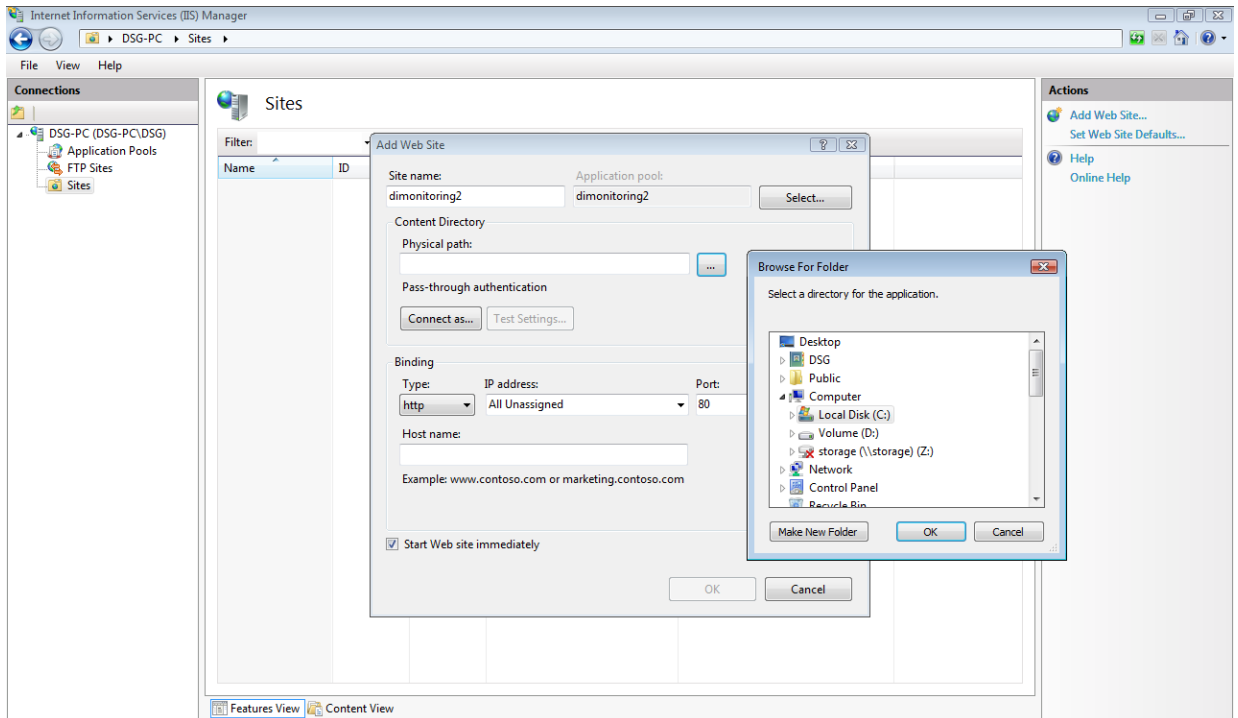


Figure 13 - Setting up the URL

Step 5

From the **Connections** panel, expand the top di Monitoring site and right click the di Monitoringda folder. Select **Convert to Application**. Before clicking **OK**, make sure that the Application pool is “dimonitoring2” or the one that you created. Select **OK** (Fig. 14).

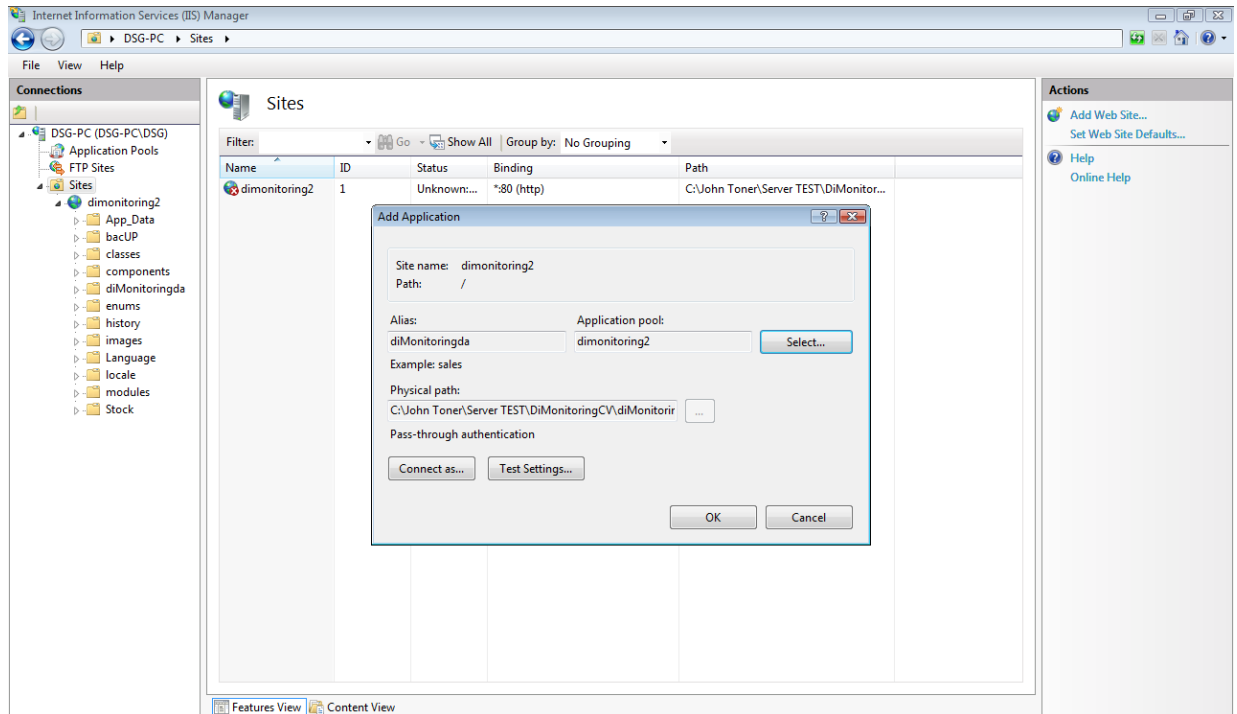


Figure 14 - Linking the di Monitoring application to the URL

An application has now been added for dimonitoringda, showing a globe icon underneath the components folder (Fig. 15).

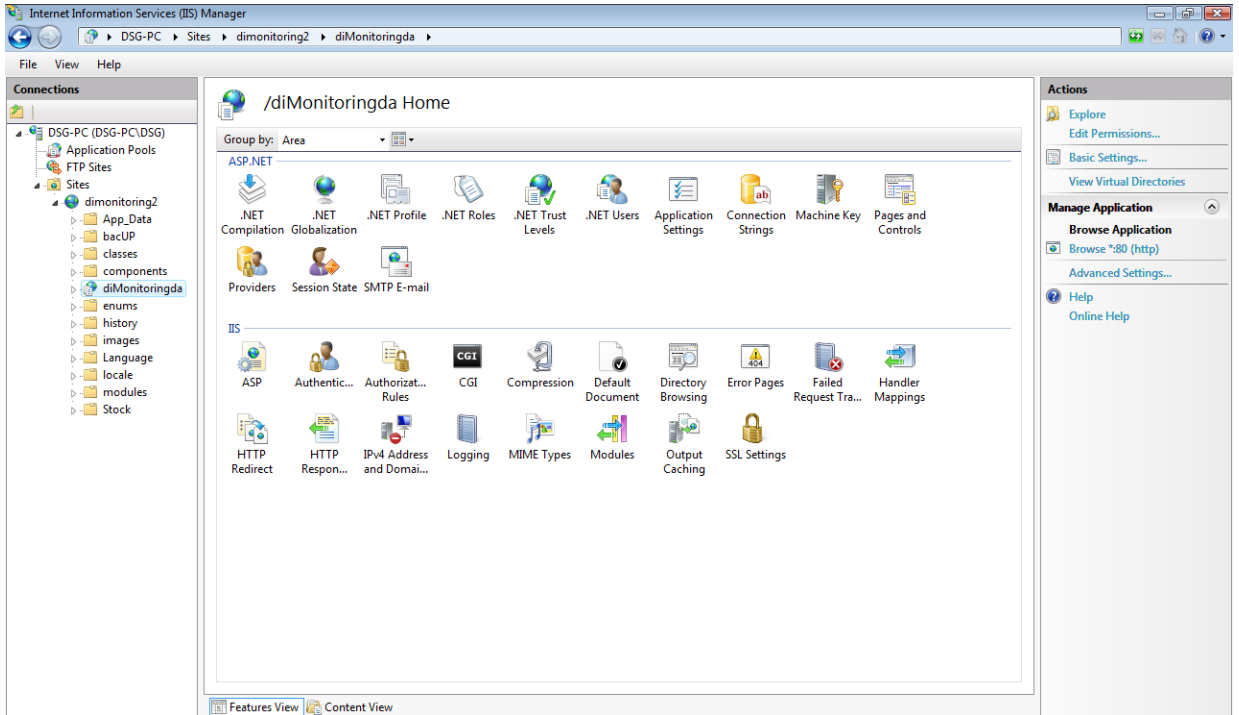


Figure 15 - View of added application

Step 6

Select the top di Monitoring application and double click **Default Document** from the bottom IIS icon list. Under the **Actions** panel on the right hand side, click **Add** and type “dimonitoring.html” under the name field. Click **OK** (Fig. 16).

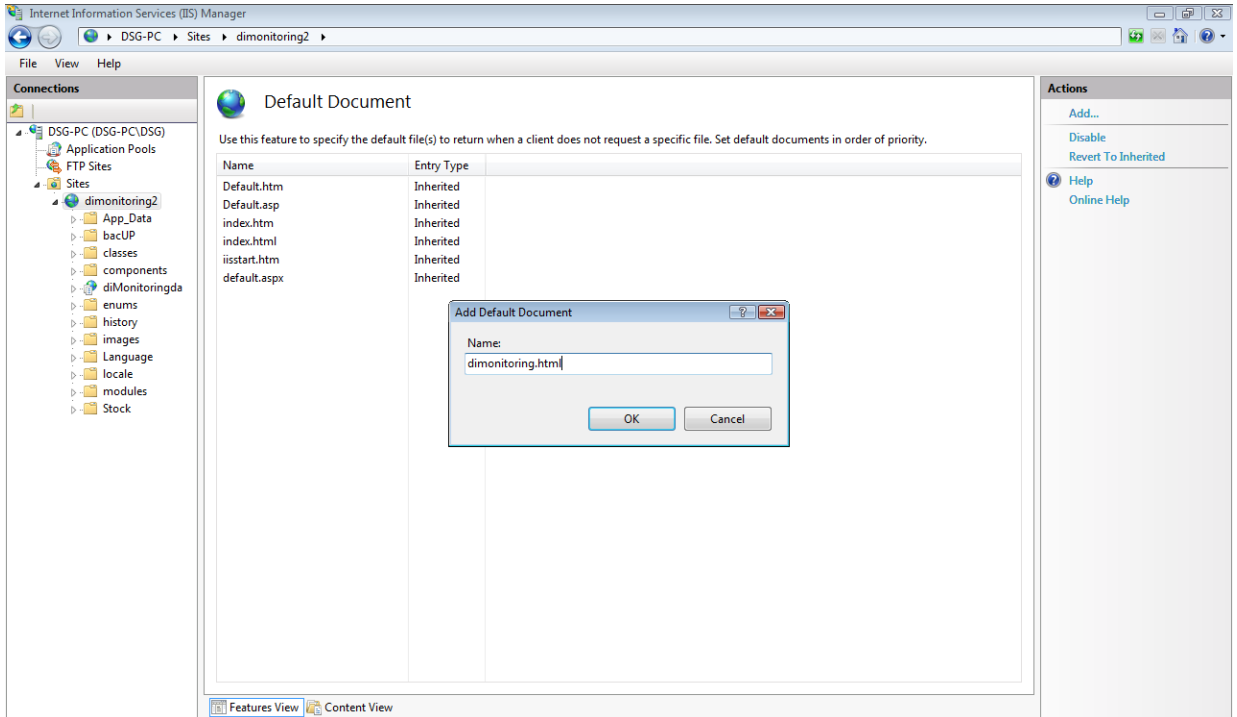


Figure 16 - Establishing a default document

Step 7

Select the top di Monitoring globe icon and double click the **MIME Types** icon from the IIS bottom pane. Select **Add** from the **Actions** menu. Type “.swz” under **File name extension** and “application/x-shockwave-flash” under **MIME type**. Click **OK** (Fig. 17).

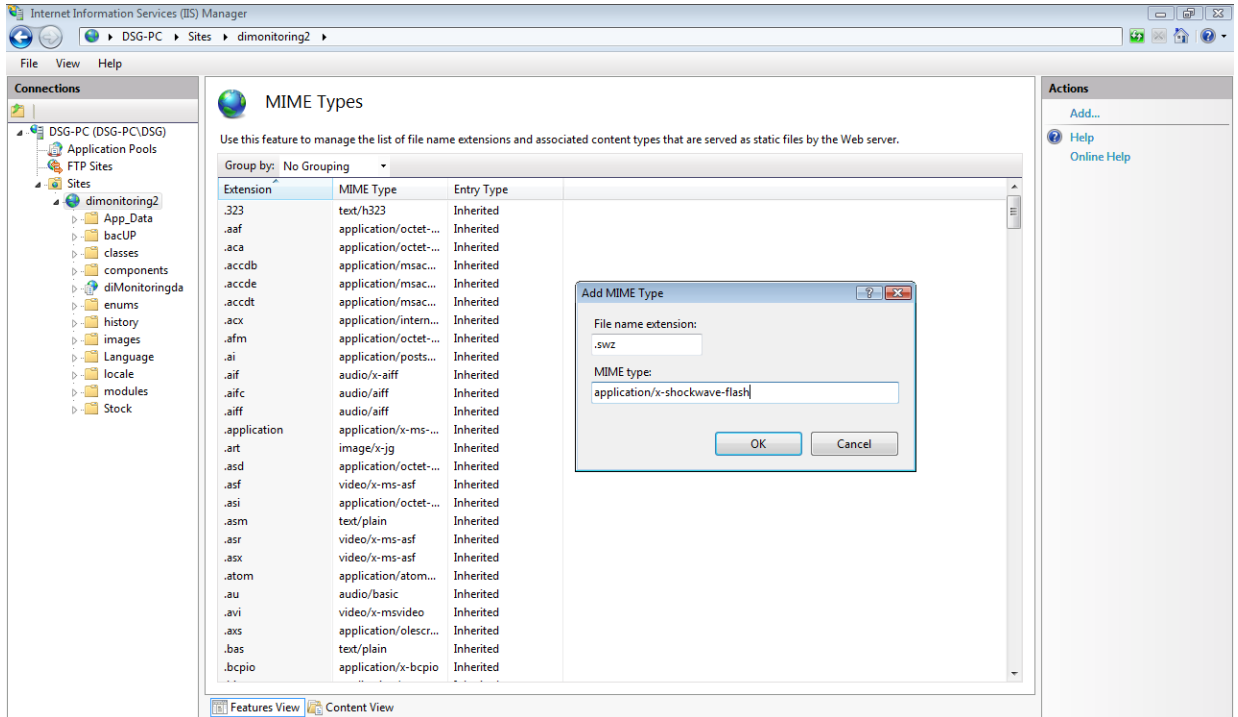


Figure 17 - Adding the MIME type extension

Step 8

Right click the top Di Monitoring globe icon, select **Manage website** from the drop-down list, and choose **Browse**. Your browser should open to the di Monitoring log in page (Fig. 18).

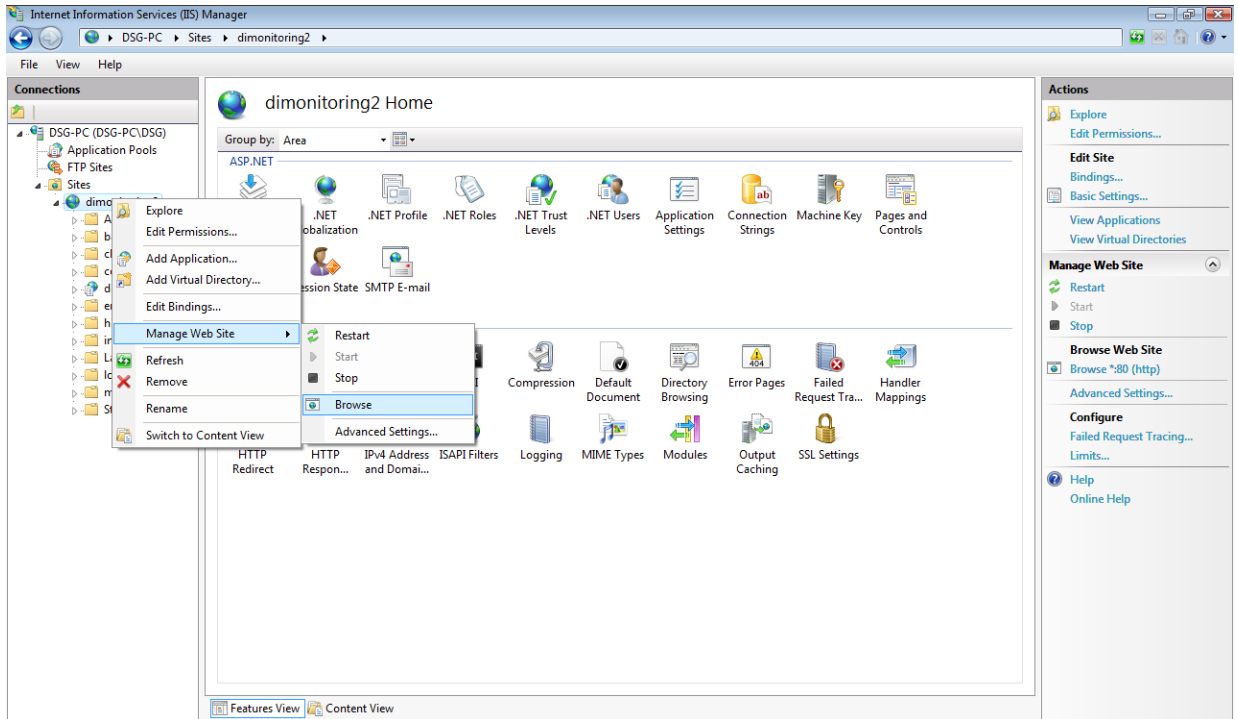


Figure 18 - Browsing for the di Monitoring URL

Creating a Virtual ISS Directory

Follow the steps below to create a virtual directory (Fig. 19).

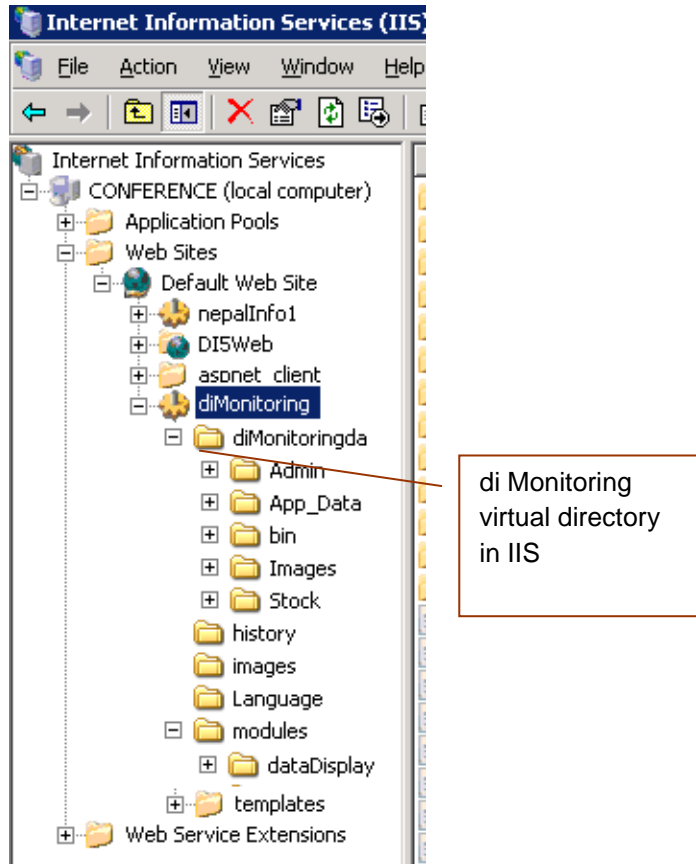


Figure 19 - Creating a virtual directory using IIS

Step 1

To create a virtual directory, right-click on the di Monitoring folder in the IIS window and click **Properties** from the context menu. Under the **Virtual Directory** tab, either browse to select the application folder or type in the full path of the application folder (Fig. 20).

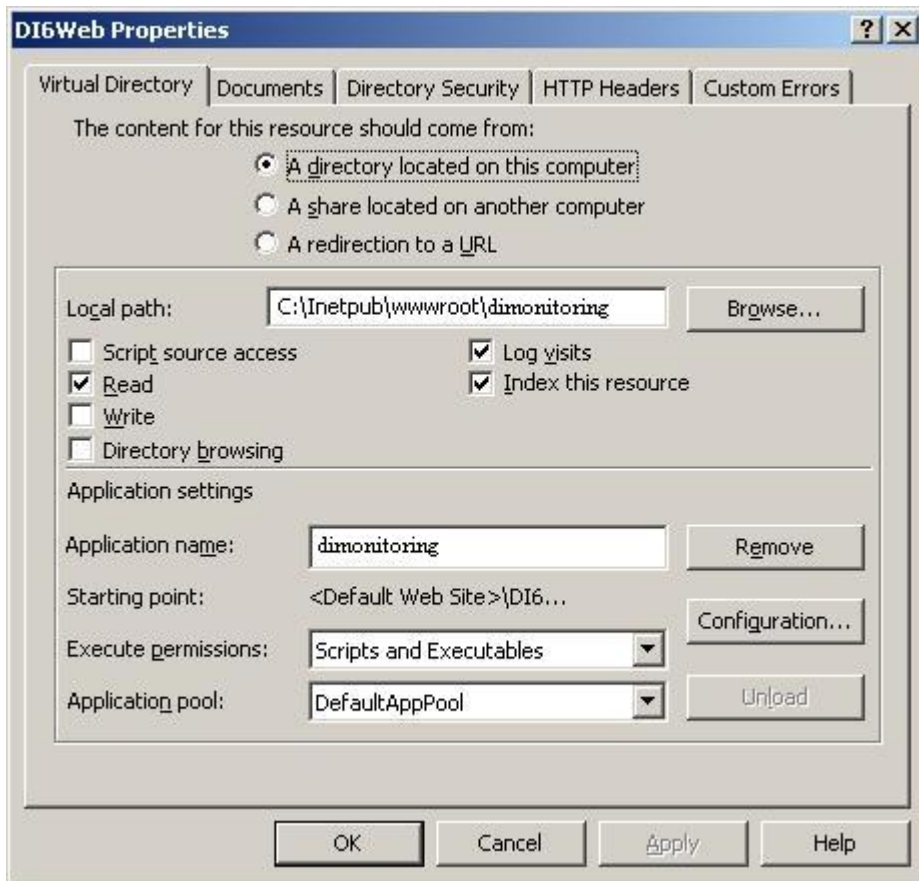


Figure 20 - Setting the virtual directory

Step 2

In the IIS window, select the **Documents** tab and set **diMonitoring.html** as the default document. If not set by default, click **Add**, type **diMonitoring.html** and use the **Move Up** button to move it to the top of the list (Fig. 21).

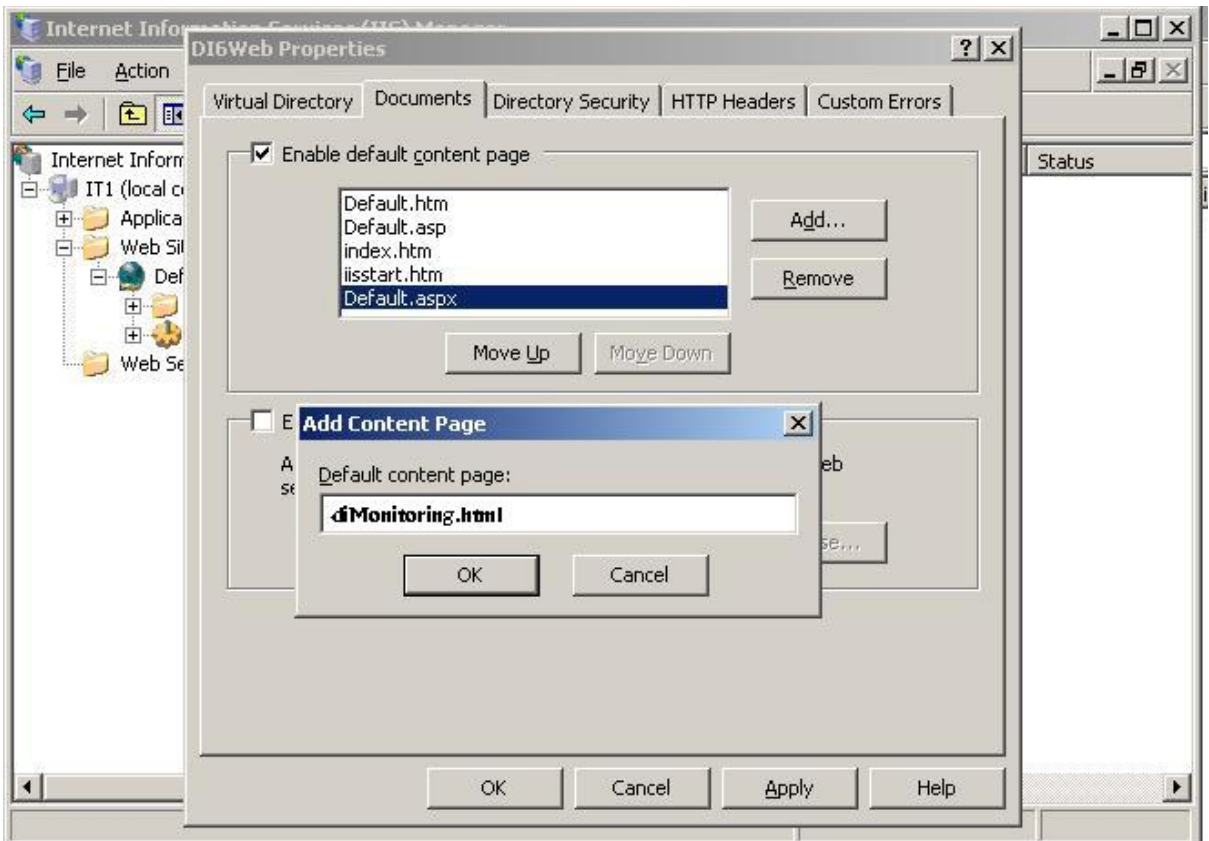


Figure 21 - Setting diMonitoring.html as the default document

Under the **ASP.NET** tab of IIS, please ensure that **ASP.NET version 2.0** is selected in the drop-down box (Fig. 22).

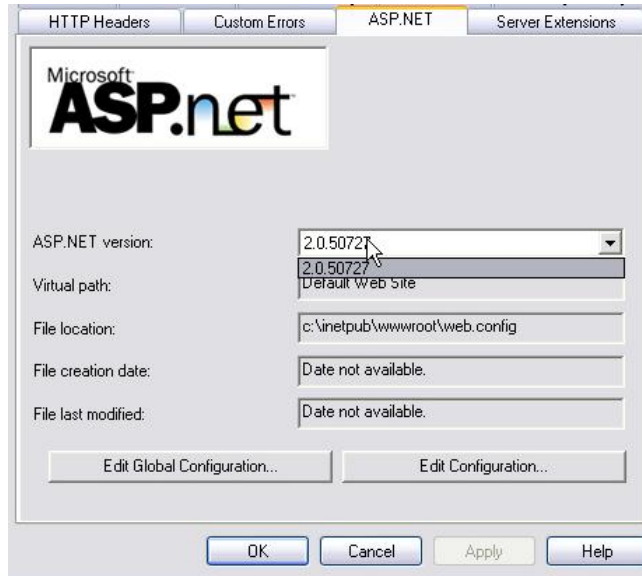


Figure 22 - Selecting ASP.NET version 2.0

Step 3

Repeat the above process again for the sub folder **diMonitoringda** (Fig.'s 23 and 24).

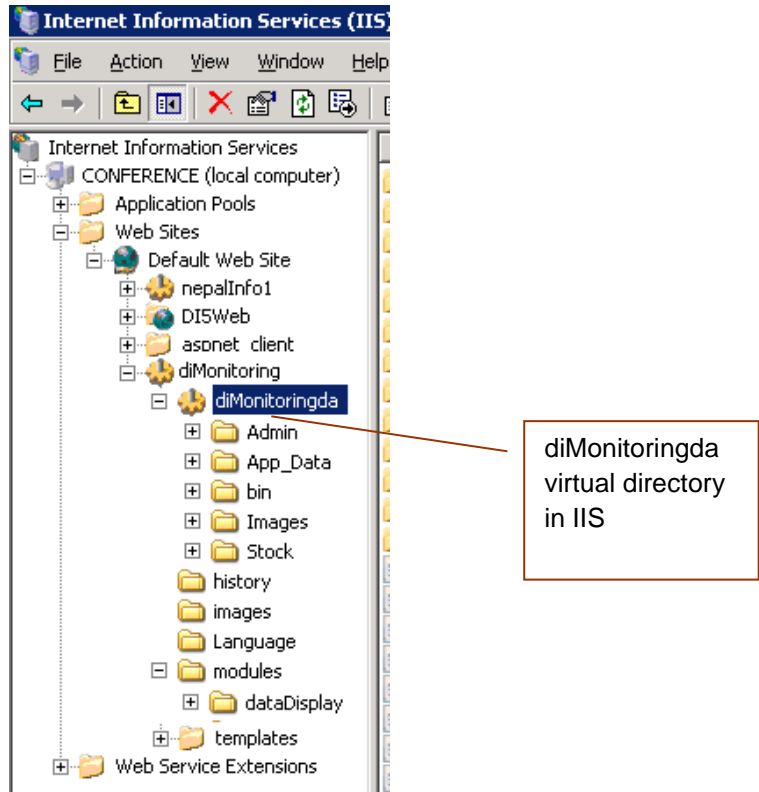


Figure 23 - Creating a virtual directory using IIS

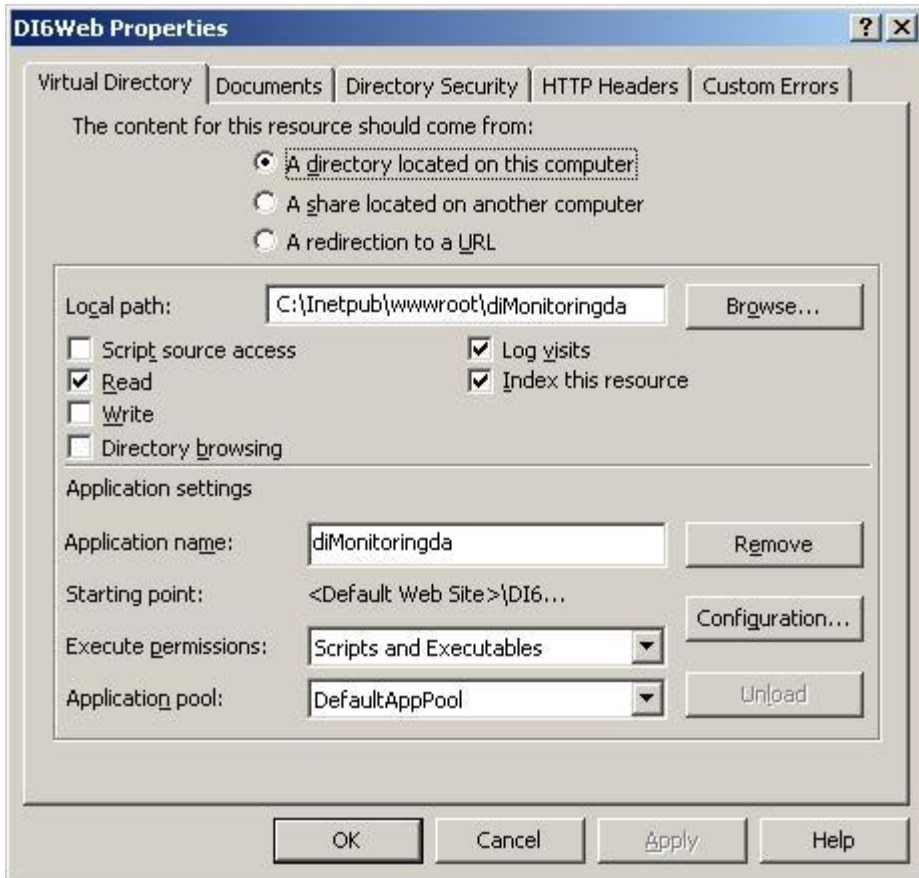


Figure 24 - Setting the virtual directory

Accessing the di Monitoring Web Application

The di Monitoring Web application can now be accessed from the server or from any client location. Multiple users can now log on and access data from the SQL server database.

Step 1

To access di Monitoring from the server, launch any web browser. In the address bar, type <http://localhost/dimonitoring2/>

Step 2

To access di Monitoring from any client machine. launch any web browser and in the address bar, type `http://<windows 2003 server name or system IP address>/dimonitoring2/`

Configuring 64-Bit Systems

Note that 64-bit systems require a specific set-up for di Monitoring installation. Follow these instructions to configure your system.

Step 1

From the **Application Pools** icon, select your di Monitoring application pool and select **Advanced Settings** from the **Action** menu panel on the right hand side. Under the **General** menu, change the **Enable 32-bit application** status to **True**. Click **OK** (Fig. 25).

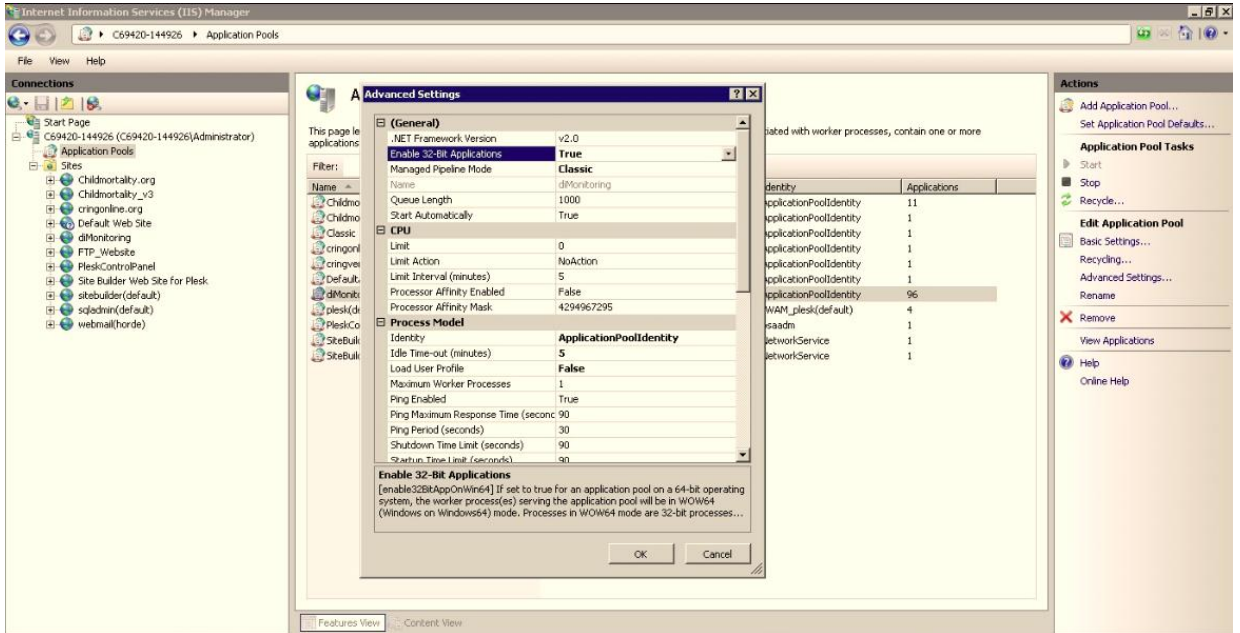


Figure 25 - Setting up a 64-bit system for the 32-bit application