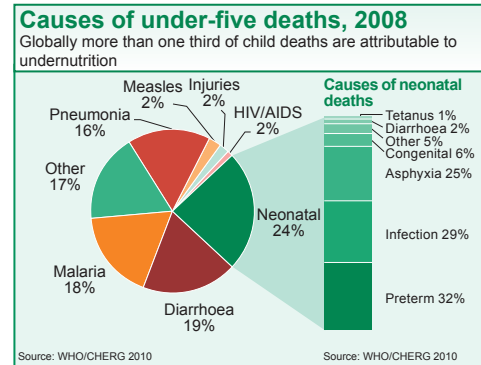
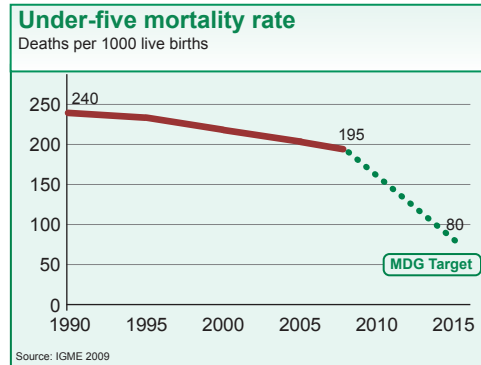




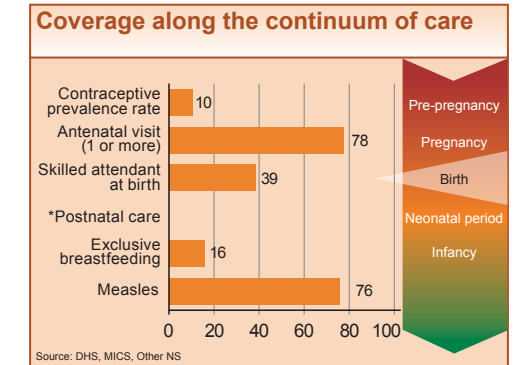
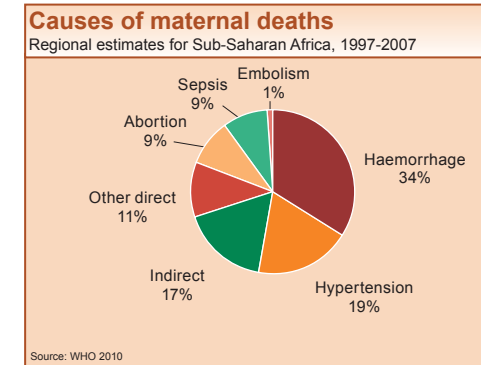
DEMOGRAPHICS

| | |
|--|--------------|
| Total population (000) | 1,575 (2008) |
| Total under-five population (000) | 265 (2008) |
| Births (000) | 65 (2008) |
| Birth registration (%) | 39 (2006) |
| Under-five mortality rate (per 1000 live births) | 195 (2008) |
| Infant mortality rate (per 1000 live births) | 117 (2008) |
| Neonatal mortality rate (per 1000 live births) | 45 (2008) |
| Total under-five deaths (000) | 12 (2008) |
| Maternal mortality ratio (per 100,000 live births) | 1,100 (2005) |
| Lifetime risk of maternal death (1 in N) | 13 (2005) |
| Total maternal deaths | 890 (2005) |



MATERNAL AND NEWBORN HEALTH

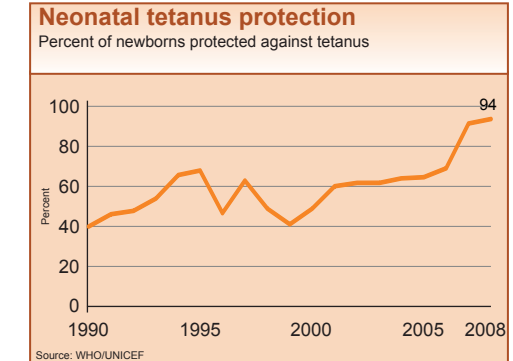
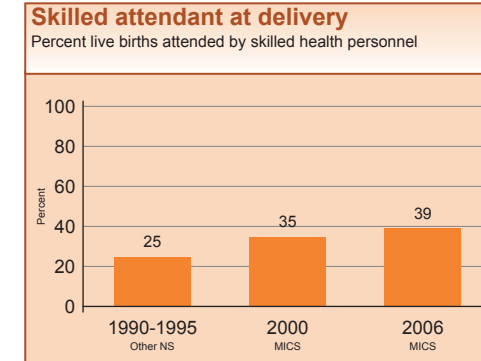
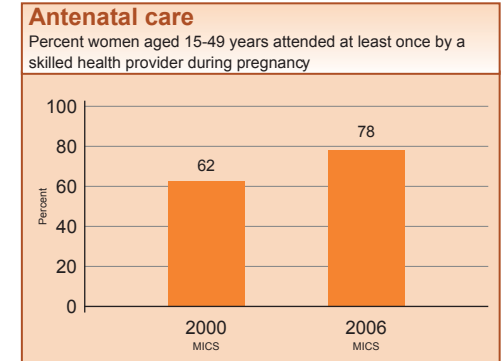
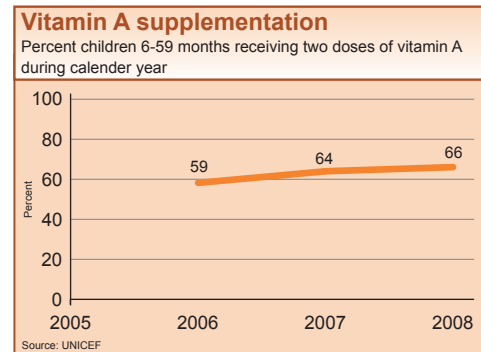
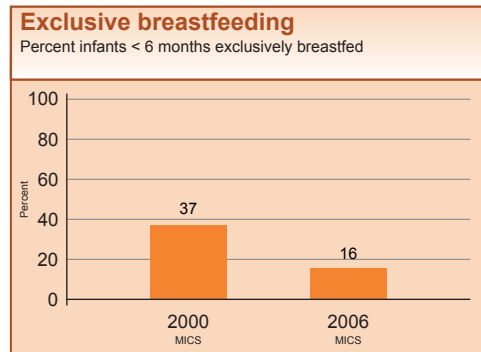
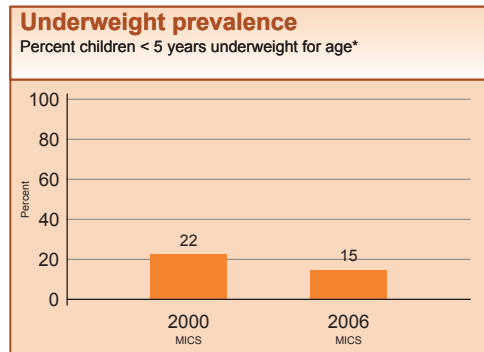
| | |
|---|------------|
| Adolescent birth rate (births per 1,000 women) | 170 (2000) |
| Unmet need for family planning (%) | --- |
| Antenatal visits for woman (4 or more visits, %) | --- |
| Intermittent preventive treatment for malaria (%) | 7 (2006) |
| C-section rate (total, urban, rural, %) | --- |
| Early initiation of breastfeeding (within 1 hr of birth, %) | 23 (2006) |
| Postnatal visit for baby (within 2 days for home births, %) | --- |



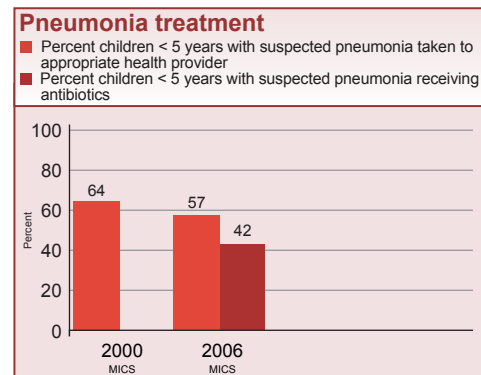
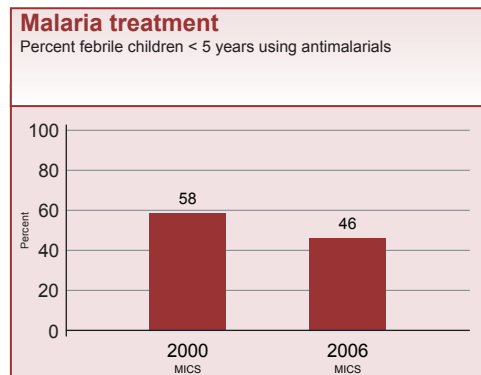
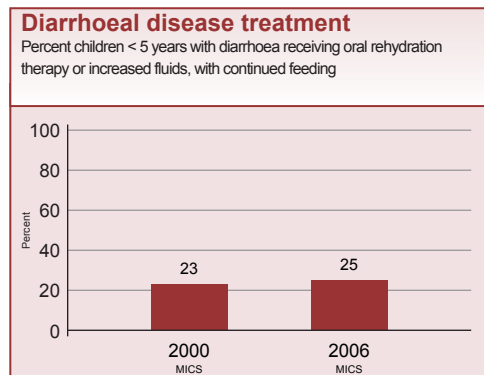
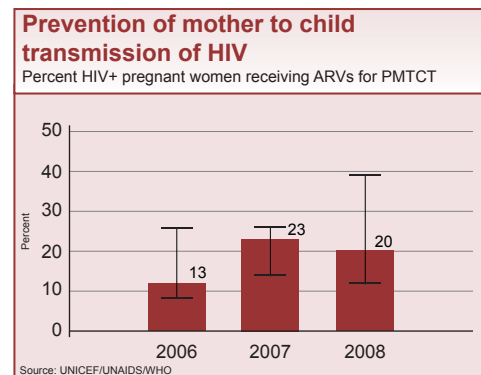
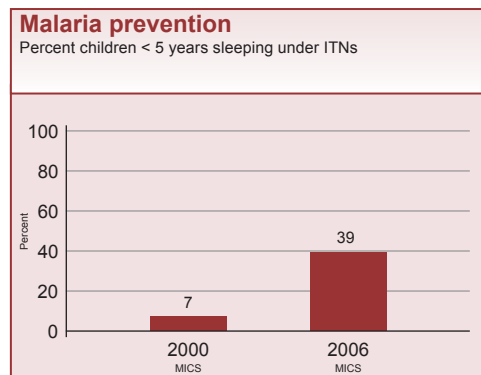
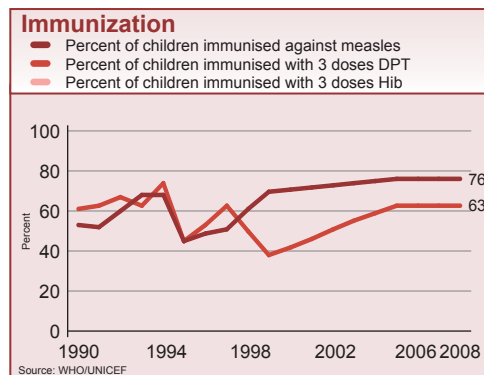
INTERVENTION COVERAGE FOR MOTHERS, NEWBORNS AND CHILDREN

NUTRITION

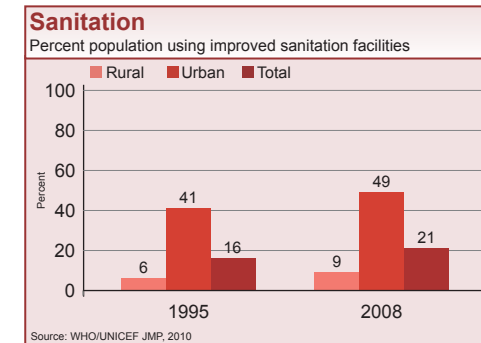
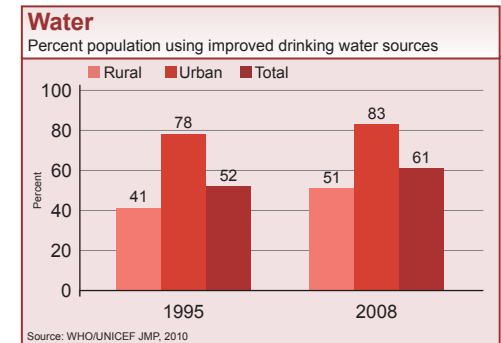
| | | | |
|--|-----------|--|-----------|
| Stunting prevalence (moderate and severe, %) | 47 (2006) | Complementary feeding rate (6-9 months, %) | 35 (2006) |
| Wasting prevalence (moderate and severe, %) | 8 (2006) | Low birthweight incidence (%) | 24 (2006) |



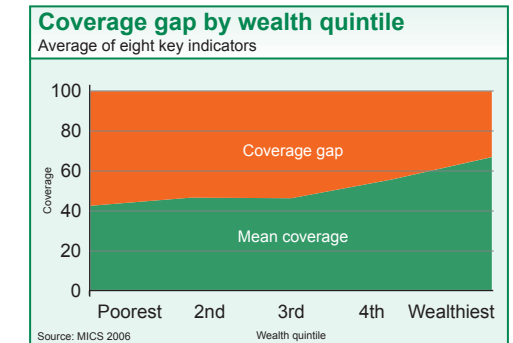
CHILD HEALTH



WATER AND SANITATION



EQUITY



POLICIES

| | |
|--|---------|
| International Code of Marketing of Breastmilk Substitutes | Partial |
| New ORS formula and zinc for management of diarrhoea | Partial |
| Community treatment of pneumonia with antibiotics | No |
| IMCI adapted to cover newborns 0-1 week of age | No |
| Costed implementation plan(s) for maternal, newborn and child health available | Yes |
| Midwives be authorised to administer a core set of life saving interventions | No |
| Maternity protection in accordance with ILO Convention 183 | No |
| Specific notification of maternal deaths | Yes |

SYSTEMS

Financial Flows and Human Resources

| | |
|---|------------|
| Per capita total expenditure on health (US\$) | 33 (2007) |
| General government expenditure on health as % of total government expenditure (%) | 4 (2007) |
| Out-of-pocket expenditure as % of total expenditure on health (%) | 41 (2007) |
| Density of health workers (per 10,000 population) | 6.0 (2008) |
| Official Development Assistance to child health per child (US\$) | 12 (2007) |
| Official Development Assistance to maternal and neonatal health per live birth (US\$) | 20 (2007) |
| National availability of Emergency Obstetric Care services (% of recommended minimum) | 127 (2002) |